



Control Cabinet and Workstation

Introduction

U.P.I Valve Remote Control System is designed for reliable and cost-effective operation throughout the ship's entire life using latest available technology. Our VRCS can be controlled Valve, Pump and Hydraulic Pump by PC Workstation, LCD Color Touch Graphic Panel or Mimic diagram are built-in the various kind of control cabinet.

And also these are indicated Tank Level/Volume/Temperature, Draft Level and Valve/Pump/Bilge conditions.



Piano Type Console

- Equipped with :
- TFT Color Monitor
 - Analogue/Digital Indicator
 - Programmable Logic Controller (PLC)
 - Mechanical switch/lamp
 - Alarm annunciator
 - Related system made in other companies



Floor Mount Type

- Solenoid valve
- Flow meter
- Various kind of hydraulic parts



Floor Mount Type

- LCD Color Touch Panel
- Programmable Logic Controller (PLC)
- Mechanical switch/lamp
- Alarm annunciator
- Related system made in other companies



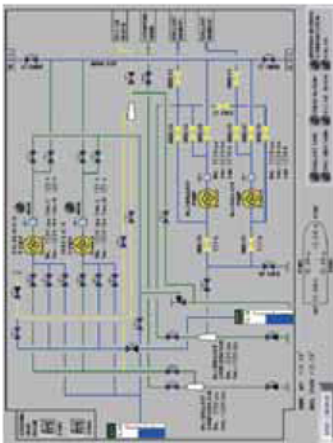
DCS Unit of Built-in Type

- Programmable Logic Controller (PLC)
- VRCS circuit
- Level measuring circuit
- Intrinsically safe circuit
- Digital Communication for AMS and Loading Computer
- Alarm annunciator circuit



PC Workstation

- Marine-specific TFT color monitor
- Marine-specific Personal Computer
- Keyboard and controller
- VRCS
- Alarm annunciator



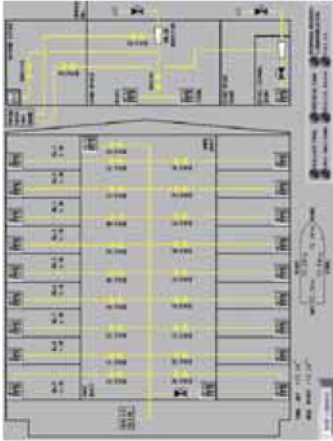
Engine Room

- Valve Control
- Pump Control
- Manual Valve Check
- Common alarm
- Bilge alarm
- Ballast Tank Level/Volume
- Fo/Do Tank Level/Volume/Temp.
- Draft Level
- Trim · heel Angle



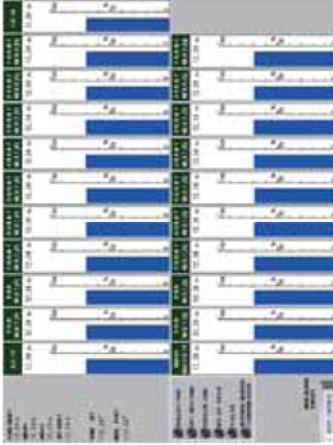
Ballast Piping

- Valve Control
- Manual Valve Check
- Common alarm
- Bilge alarm
- Ballast Tank Level/Volume
- Draft Level
- Trim · heel Angle



Bilge Piping

- Valve Control
- Pump Control
- Manual Valve Check
- Common alarm
- Bilge alarm
- Draft Level
- Trim · heel Angle



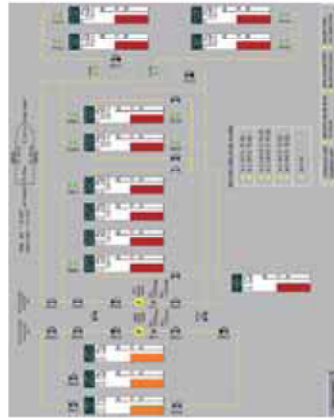
Ballast Tank Data

- Common alarm
- Ballast Tank Level/Volume
- Draft Level
- Trim · heel Angle



Fo / Do Tank Data

- Valve Control
- Common alarm
- Fo/Do Tank Level/Volume/Temp.
- Draft Level
- Trim · heel Angle



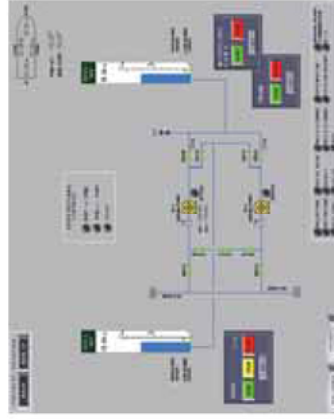
Fo Filling

- Valve Control
- Pump Control
- Manual Valve Check
- Common alarm
- Fo/Do Tank Level/Volume/Temp.
- Draft Level
- Trim · heel Angle



Valve Hydraulic Unit

- Hydraulic Unit cont./alarm



Anti-heeling

- Valve Control
- Pump Control
- Manual Valve Check
- Common alarm
- Ballast Tank Level/Volume
- Draft Level
- Trim · heel Angle
- Anti-heeling (Auto/Manual) cont.